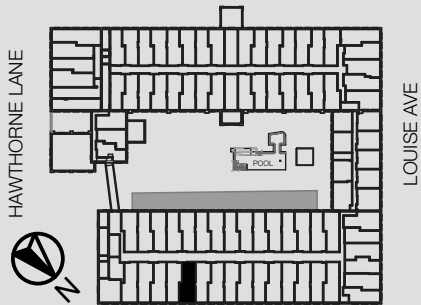


# UNIT 283

# HAWTHORNE MILL

833.465.6387 [o]  
www.hawthornemill.com



1101 Hawthorne Lane  
Charlotte, NC 28205

2 BED/ 2 BATH

1093 SQ FT

16 FT CEILINGS

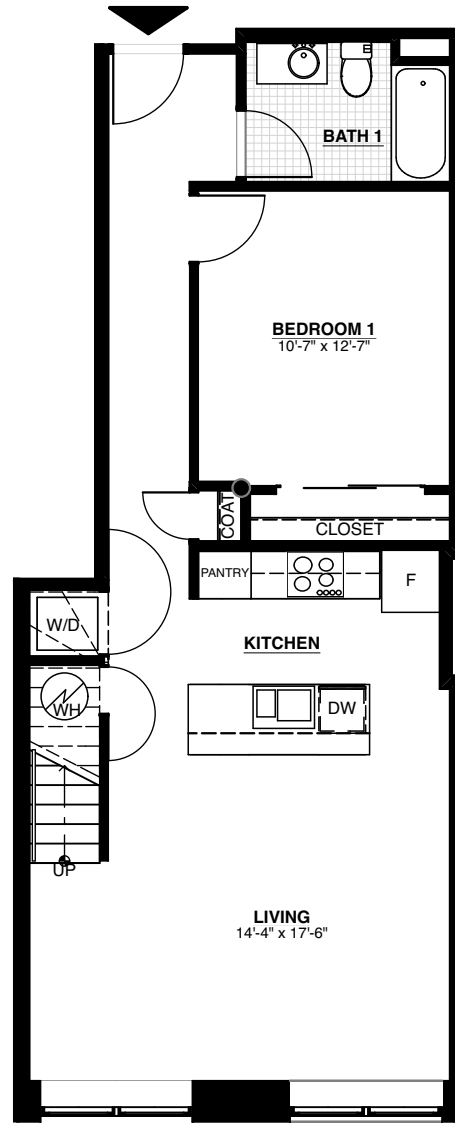
HISTORIC BRICK WALLS

ORIGINAL HARDWOOD FLOORS

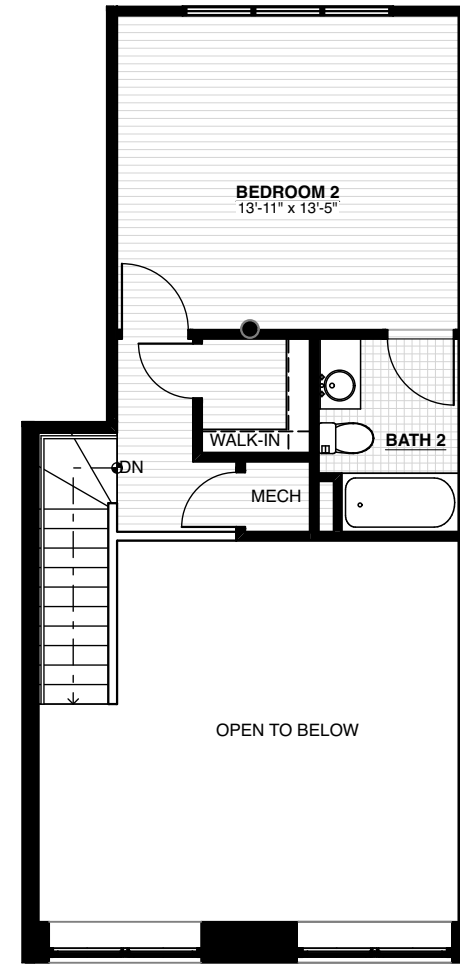
STAINLESS STEEL APPLIANCES

GRANITE COUNTERTOPS

WASHER/ DRYER IN UNIT



LOWER LEVEL



UPPER LEVEL

Square footages, where indicated on plan, are approximate. Layouts of interiors are for general reference only, and are not intended to depict precisely the actual as-built conditions. Drawings are not to scale and are subject to change.