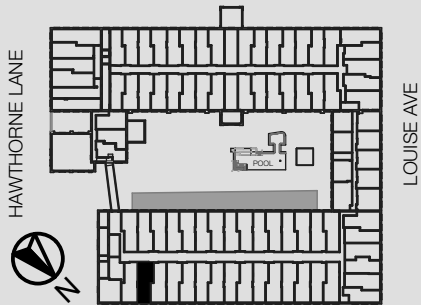


# UNIT 289



1101 Hawthorne Lane  
Charlotte, NC 28205

2 BED/ 2 BATH

1038 SQ FT

16 FT CEILINGS

HISTORIC BRICK WALLS

ORIGINAL HARDWOOD FLOORS

STAINLESS STEEL APPLIANCES

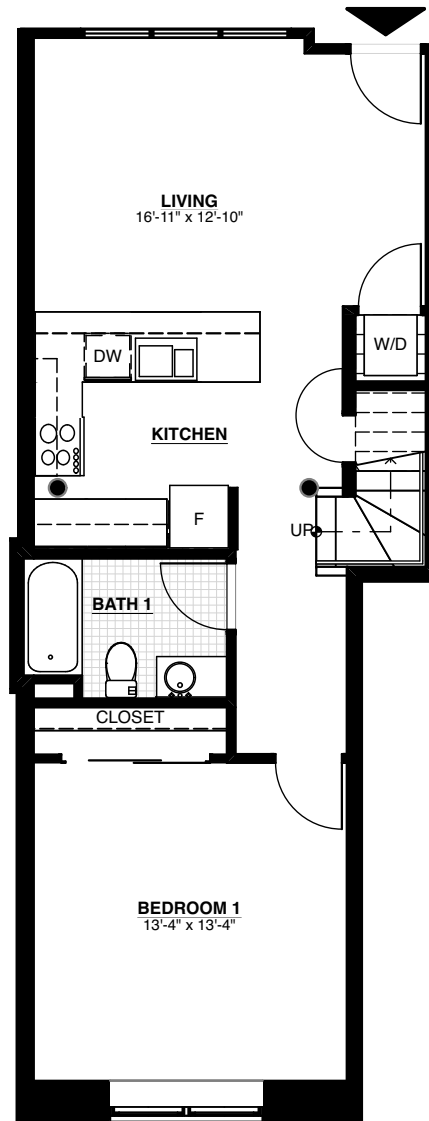
GRANITE COUNTERTOPS

WASHER/ DRYER IN UNIT

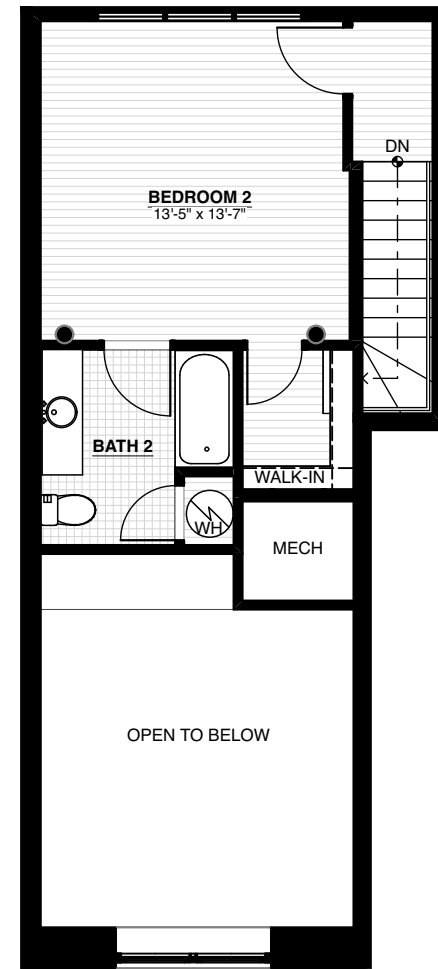
Square footages, where indicated on plan, are approximate. Layouts of interiors are for general reference only, and are not intended to depict precisely the actual as-built conditions. Drawings are not to scale and are subject to change.

# HAWTHORNE MILL

833.465.6387 [o]  
www.hawthornemill.com



LOWER LEVEL



UPPER LEVEL